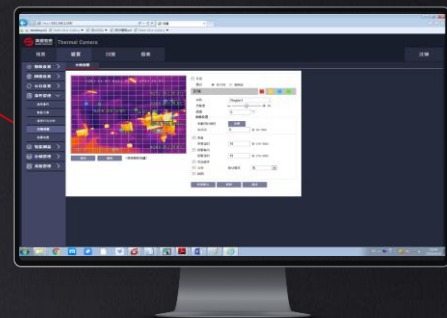


DS60xxFT-L Thermal & Optical Bi-spectrum PTZ

Precise Positioning for Multiple Objects, Safe and Comprehensive



Introduction

DS60xxFT-L series is designed for medium-range indoor and outdoor monitoring and temperature measurement. With self-developed uncooled vox microbolometer by Guide, the DS60xxFT-L series features 24-hour monitoring, sharp images and highly accurate temperature measurement in harsh weather conditions. By adopting the worm gear design, the durable DS60xxFT-L series provides precise positioning.



Features and Benefits

- 640×512 IR Resolution
- 25 mm/50 mm lens
- Web access for configuration
- Up to 300 presets and 12 spots/lines/areas for every preset
- Highly accurate temperature measurement, temperature analysis and alarm in real time and tracking of temperature history
- Fire detection & alarm and detection of intrusions and tripwire

Applications

For indoor and outdoor scenes, including:

- Temperature measurement in transformer substations
- Prevention of straw burning
- Fire prevention for forests, scenic places and cultural museums
- Port and petrochemical facilities monitoring

Specifications

Model	DS6013FT-L	DS6025FT-L
Thermal Camera		
Detector Type	Uncooled VOx Microbolometer	
IR Resolution	640×512	
Pixel Size	17μm	
Spectral Range	8 to 14μm	
NETD	≤40 mk	
Focal Lenth	13mm	25mm
FOV(H×V)	45.4°×37°	24.5°×19.7°
Color Palettes	9 (White hot, Black hot, Fusion, Rainbow, etc.)	
Temperature Measurement		
Temperature Range	-20°C to 150°C; -20°C to 550°C	
Accuracy	±2°C or ±2%, whichever is greater	
Functions	Measurement of real-time points and multi-presets (up to 300); Measurement of 12 spots/lines/areas for every preset; Temperature alarm; Isotherm and color bar display; Temperature calibration; Unit setting: °F/°C; Real-time temperature analysis; Tracking of temperature records	
Visible Camera		
Image Sensor	1/1.9" CMOS	
Maximum Pixels	2.17 MP	
Minimum Illumination	Color: 0.001Lux @ (F1.5, AGC ON) B&W: 0.0001Lux @ (F1.5, AGC ON)	
Gain Control	Auto/Manual	
Backlight Compensation	On/Off	
Focal Length	6mm - 210mm	
Other	WDR, strong light inhibition, screen flip, exposure compensation	
Video & Audio		
Video Compression	H.264 (HighProfile, MainProfile, BasicProfile), H.265, M-JPEG	
Image Resolution	Visible: Main stream (1920×1080, 1280×720) Auxiliary stream (1280×720, D1) Thermal:1280×1024@25HZ, 640×512@25HZ, 384×288@25HZ	
Image Format	JPEG	
PTZ		
Pan Range	0° to 360° endless	
Tilt Range	-90° to 90°	
Maunal Speed	Pan: 0.1° to 30°/second; Tilt: 0.1° to 15°/second	
Presets	300	
Tour	8 (up to 32 presets per tour)	
Image Stabilization	Supported	
Functions		
Network Protocol	IPv4/IPv6, HTTP, HTTPS, 802.1x, Qos, FTP, SMTP, UPnP, DNS, DDNS, NTP, RTSP, RTP, TCP, UDP, DHCP, PPPoE, ONVIF	
Local Storage	TF card, hot-plugging	
Web Browser	Browsers under Windows system, such as IE	
Max.User Access	20 users	
Fault Detection	Network disconnection, IP conflict, encoder status, memory card status and memory storage space	
Intelligence	Detection of tripwire, intrusion, removed objects, abandoned/missing objects; Alarm triggering by target types; Filtering of false alarms; Fire detection & alarm; Auto tracking	
Interface		
Ethernet	RJ45 (10/100Base-T)	
Alarm Input	1 channel (0-5vDC)	
Alarm Output	1 channel for alarm linkage	
RS485	Supported	
Storage	TF card (128G) for manual/alarm recording	
Electrical		
Power Supply	DC24V	
Power Consumption	≤40 W	
Environmental		
Operating Condition	Temperature: -40°C to 65°C; Humidity: ≤90%	
IP Rating	IP66	
Physical		
Dimensions	≤230 mm (L) × 347 mm (W) × 196 mm (H)	
Weight	≤5.5 kg	

